

Injection Date : Mon, 2. Oct. 2023 Seq Line : 4
Location : 43
Inj. Vol. : 2 µl

Acq. Method : C:\Users\Public\Documents\ChemStation\1\Data\SE02OCT 2023-10-02
15-52-16\22010446C LCMS-6#.M

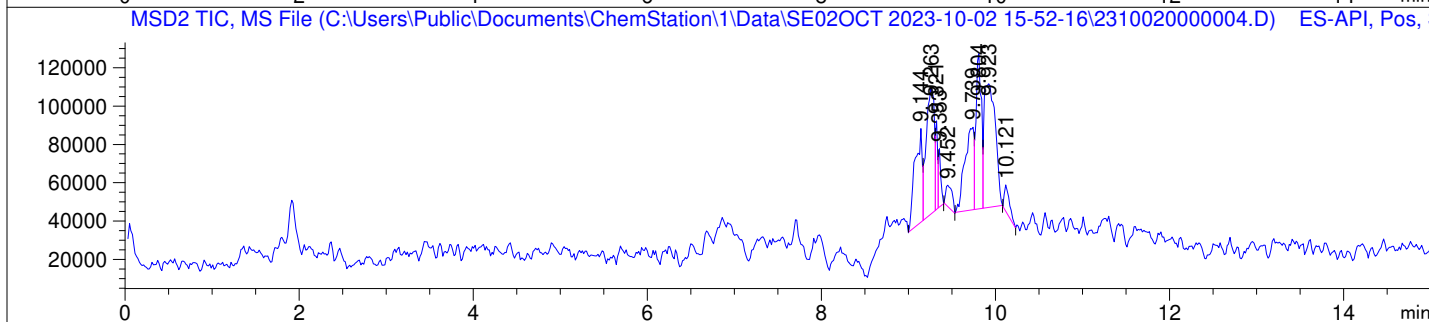
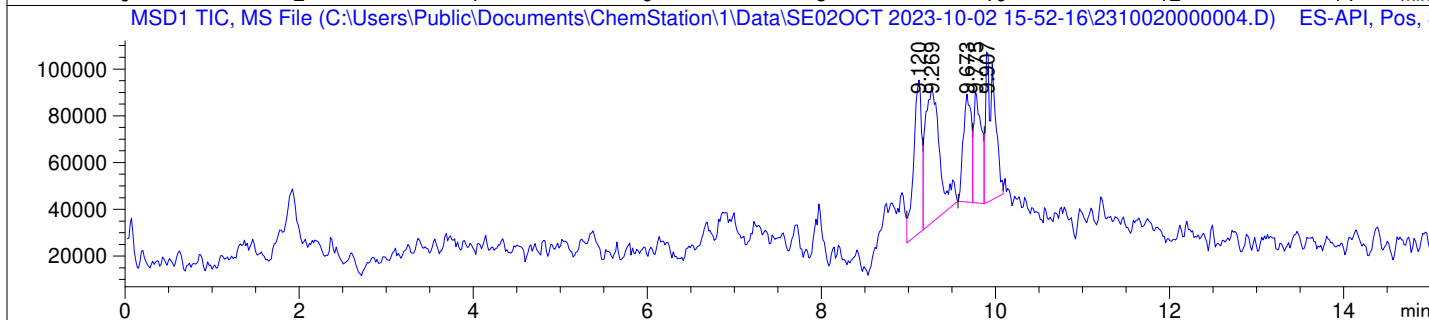
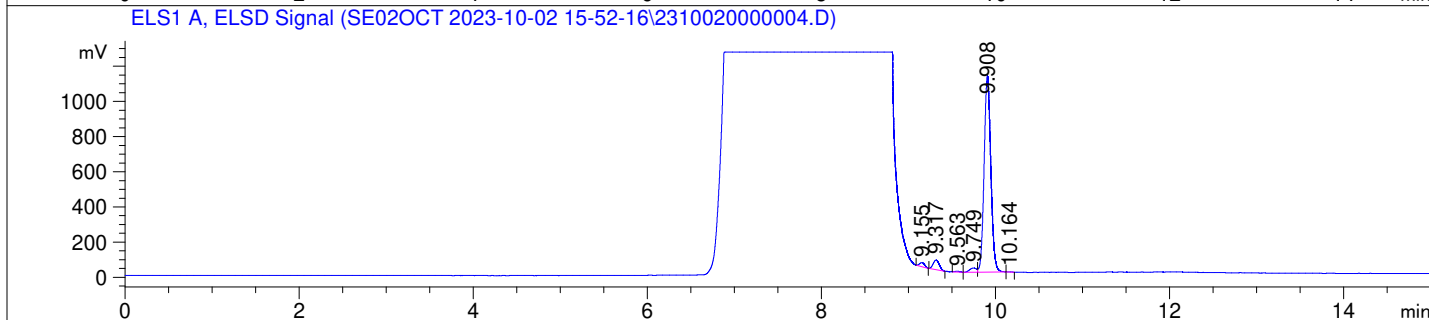
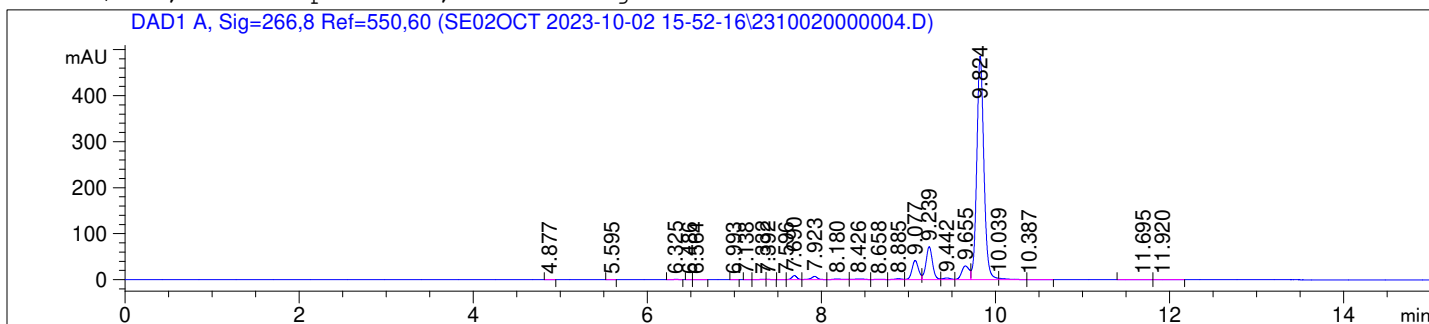
Analysis Method : C:\Users\Public\Documents\ChemStation\1\Data\SE02OCT 2023-10-02
15-52-16\22010446C LCMS-6#.M (Sequence Method)

Waters XBridge BEH Amide (4.6 x 150 mm, 2.5 µm); PN# 186006726

Mobile Phase A: 20mM Ammonium Acetate (aq) pH 8.2

Mobile Phase B: AcN

Mobile Phase A / Mobile Phase B: 5/95 (0 min) --> (10 min) --> 60/40 (5 min); Flow:
1.0 ml/min; MSD1 = positive; MSD2 = negative



DAD1 A, Sig=266,8 Ref=550,60

Peak #	Ret. Time [min]	Area [mV *s]	Area %
-----	-----	-----	-----
1	4.877	1.165	0.031
2	5.595	0.638	0.017
3	6.325	2.154	0.058
4	6.486	0.151	0.004
5	6.564	0.573	0.015
6	6.993	0.201	0.005
7	7.138	0.307	0.008
8	7.332	3.059	0.083
9	7.392	1.883	0.051
10	7.596	0.786	0.021
11	7.690	36.462	0.984
12	7.923	36.074	0.974
13	8.180	12.044	0.325
14	8.426	13.536	0.365
15	8.658	6.228	0.168
16	8.885	12.793	0.345
17	9.077	217.665	5.876
18	9.239	369.969	9.987
19	9.442	23.184	0.626
20	9.655	181.118	4.889
21	9.824	2757.294	74.432
22	10.039	21.341	0.576
23	10.387	3.419	0.092
24	11.695	1.251	0.034
25	11.920	1.133	0.031

ELS1 A, ELSD Signal

Peak #	Ret. Time [min]	Area [mV *s]	Area %
-----	-----	-----	-----
1	9.155	94.869	1.461
2	9.317	263.256	4.053
3	9.563	19.883	0.306
4	9.749	133.990	2.063
5	9.908	5977.538	92.030
6	10.164	5.649	0.087

